



Epidemiology Unit

Ministry of Health & Indigenous Medical Services

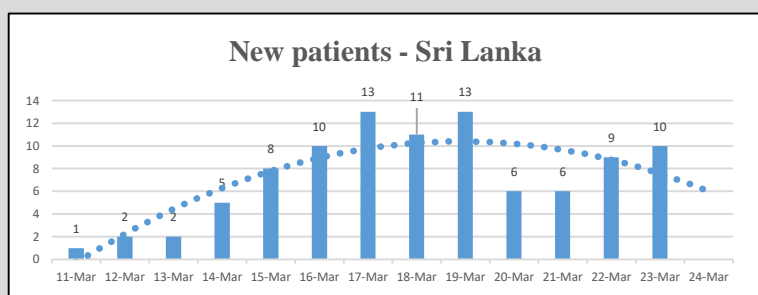
231, De Saram Place, Colombo 10, Sri Lanka

Tele: (+94 11) 2695112, 2681548, 4740490, 4740491, 4740492 Fax: (+94 11) 2696583 E-mail: chepid@slt.net.lk, epidunit@slt.net.lk Web: www.epid.gov.lk

Coronavirus disease 2019 (COVID-19) - Situation Report – 24.03.2020 – 10.00am

An outbreak of pneumonia of unknown reason was first reported on 31st December 2019 from Wuhan City in Hubei Province of China. On 7th Jan 2020, it was diagnosed as “Novel Corona Virus”. On 30th Jan 2020, World Health Organization has declared it as a Public Health Emergency of International Concern (PHEIC). On 11/02/2020 the WHO has introduced a short form for the diseases as COVID-19 and on 11/03/2020 declared as pandemic. The incubation period is reported as 2-14 days.

Local Situation



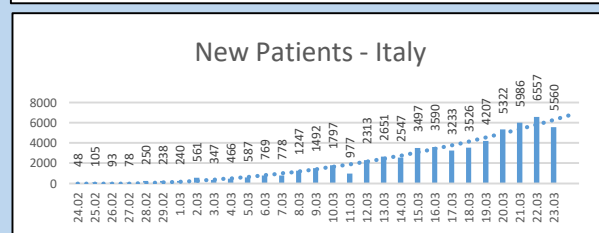
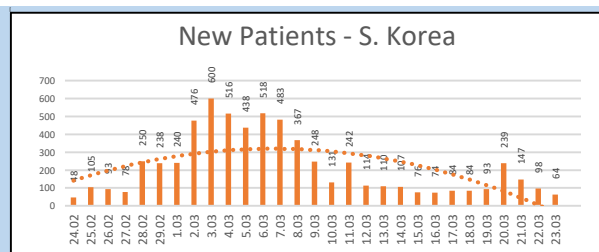
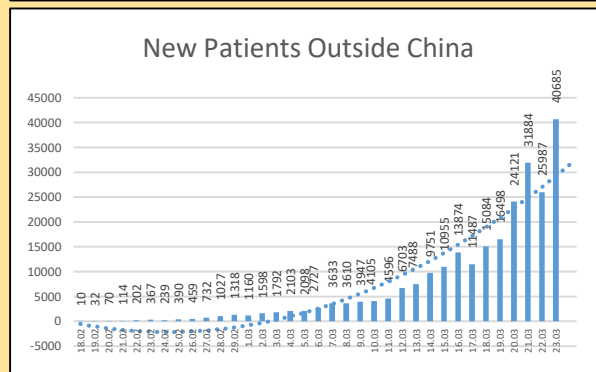
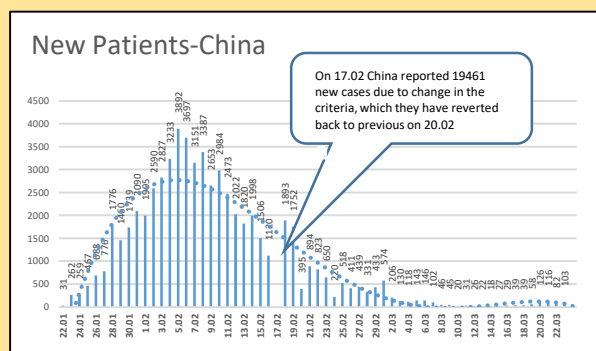
- Last confirmed patient identified on 23/03/2020
- Total number of confirmed – 97 (Recovered 2, Inward - 95)
- 95 patients- (IDH 86, BH Mulleriyawa 1, BH Welikanda 8)
- Total number of individuals in hospitals - 229

Name of the Hospital	Cumulative			Today 10am		
	Sri Lankans	Foreigners	Total	Sri Lankans	Foreigners	Total
NIID	520	76	596	95	2	97
NHSL	69	5	74	9	0	9
TH Ragama	72	2	74	9	0	9
TH Karapitiya	97	16	113	4	1	5
TH A'pura	40	2	42	0	0	0
TH Kurun.	112	1	113	10	0	10
TH Jaffna	17	1	18	6	0	6
NH Kandy	54	6	60	5	1	6
TH Battico.	15	0	15	3	0	3
DGH Gampaha	87	4	91	9	0	9
DGH Negombo	116	12	128	3	0	3
TH Rathn.	72	0	72	5	0	5
PGH Badulla	21	0	21	0	0	0
LRH	25	0	25	0	0	0
DMH	3	0	3	1	0	1
DGH Polonnaruwa	54	6	60	6	0	6
TH Kalubowila	16	0	16	0	0	0
Castle St TH	6	0	6	1	0	1
BH Ham'thota	48	0	48	11	0	11
BH Mona'gala	19	0	19	6	0	6
BH Welikanda	41	1	42	26	1	27
DGH Kaluthara	71	0	71	12	0	12
Chest Hospital Welisara	6	0	6	3	0	3
Total	Incorrect to total as transfers counts in both the institutions			224	5	229

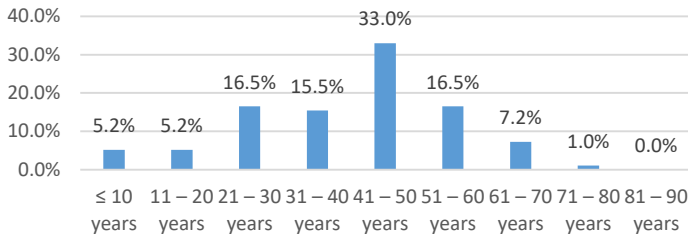
Source : Epidemiology Unit, Disease Surveillance System

Global Situation

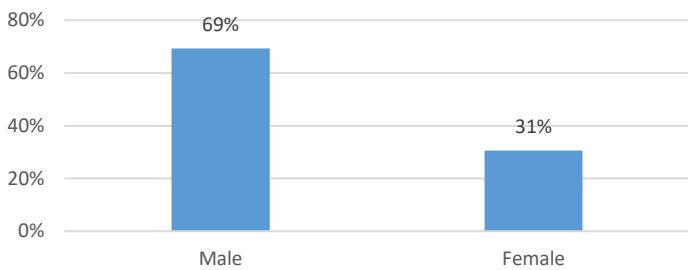
- 332,930 – Laboratory_confirmed cases (81,601 – China, 251,329 – Outside China)
 - 14,510 deaths (3276 – China, 11,234 outside China)
 - Patients are reported from 189 countries/territories
- Ref. WHO situation report - 23/03/2020



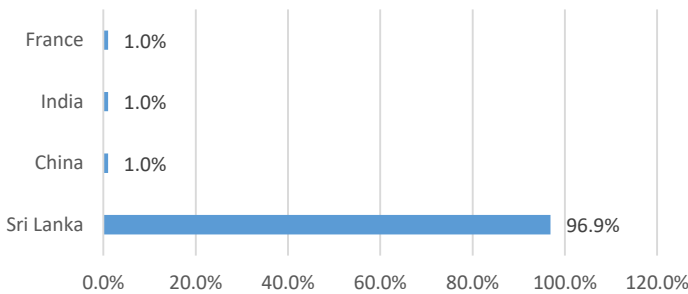
Age distribution of COVID-19 confirmed in Sri Lanka



Gender distribution of COVID-19 confirmed in Sri Lanka



COVID-19 confirmed in Sri Lanka - Nationality



District Distribution of Confirmed Patients

DISTRICT	Count
COLOMBO	21
KALUTARA	13
GAMPAHA	10
PUTTALAM	8
RATNAPURA	3
KURUNEGALA	1
GALLE	1
KEGALLE	1
BATTICOLOA	1
BADULLA	1
JAFFNA	1
MATARA	1
KANDY	0
MATALE	0
NUWARAELIYA	0
HAMBANTOTA	0
KILINOCHCHI	0
MANNAR	0
VAVUNIA	0
MULLATIVU	0
AMPARA	0
TRINCOMALEE	0
ANURADHAPURA	0
POLONNARUWA	0
MONERAGALA	0
KALMUNAI	0
QUARANTINE CENTERS	32
FOREIGNERS	3
Total	97