



Epidemiology Unit

Ministry of Health & Indigenous Medical Services

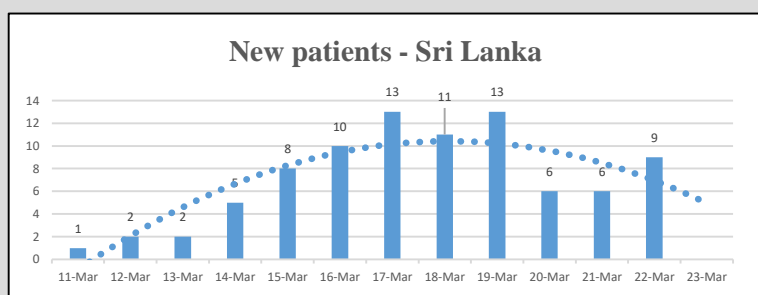
231, De Saram Place, Colombo 10, Sri Lanka

Tele: (+94 11) 2695112, 2681548, 4740490, 4740491, 4740492 Fax: (+94 11) 2696583 E-mail: chepid@slt.net.lk, epidunit@slt.net.lk Web: www.epid.gov.lk

Coronavirus disease 2019 (COVID-19) - Situation Report – 23.03.2020 – 10.00am

An outbreak of pneumonia of unknown reason was first reported on 31st December 2019 from Wuhan City in Hubei Province of China. On 7th Jan 2020, it was diagnosed as “Novel Corona Virus”. On 30th Jan 2020, World Health Organization has declared it as a Public Health Emergency of International Concern (PHEIC). On 11/02/2020 the WHO has introduced a short form for the diseases as COVID-19 and on 11/03/2020 declared as pandemic. The incubation period is reported as 2-14 days.

Local Situation



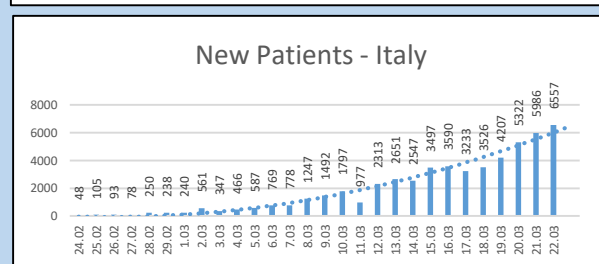
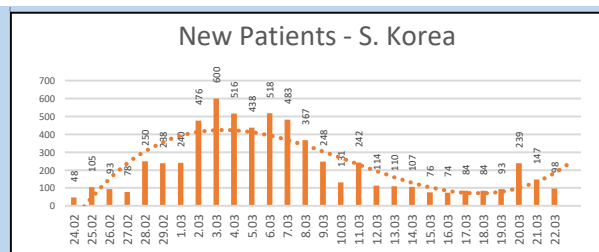
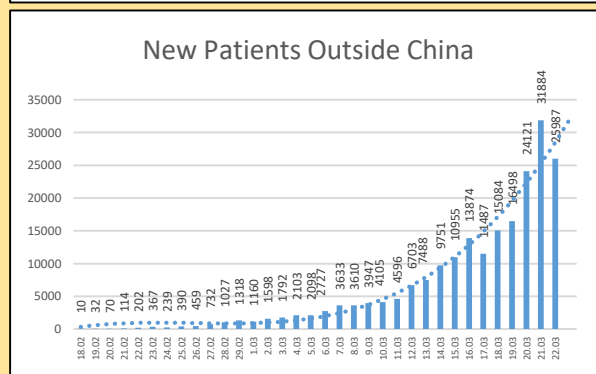
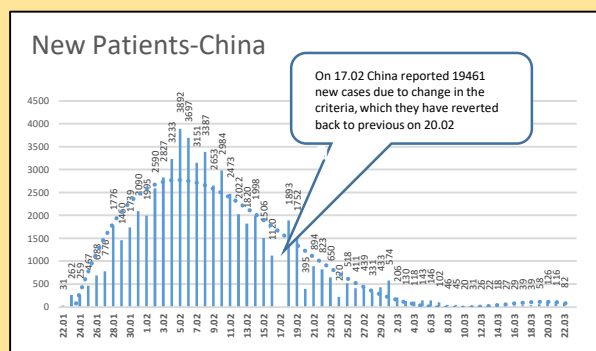
- Last confirmed patient identified on 22/03/2020
- Total number of confirmed – 87 (1 in Jan, 86 in Mar)
- 86 patients- (IDH 78, BH Welikanda 8)
- Total number of individuals in hospitals - 227

Name of the Hospital	Cumulative			Today 10am		
	Sri Lankans	Foreigners	Total	Sri Lankans	Foreigners	Total
NIID	494	76	570	88	2	90
NHSL	66	5	71	5	0	5
TH Ragama	72	2	74	18	0	18
TH Karapitiya	94	15	109	5	3	8
TH A'pura	40	2	42	6	0	6
TH Kurun.	106	1	107	6	0	6
TH Jaffna	11	1	12	1	1	2
NH Kandy	49	5	54	0	0	0
TH Battico.	13	0	13	2	0	2
DGH Gampaha	87	4	91	19	0	19
DGH Negombo	113	12	125	18	0	18
TH Rathn.	67	0	67	2	0	2
PGH Badulla	21	0	21	0	0	0
LRH	24	0	24	2	0	2
DMH	2	0	2	0	0	0
DGH Polonnaruwa	51	6	57	5	1	6
TH Kalubowila	16	0	16	0	0	0
Castle St TH	6	0	6	1	0	1
BH Ham'thota	38	0	38	5	0	5
BH Mona'gala	14	0	14	3	0	3
BH Welikanda	41	1	42	25	0	25
DGH Kaluthara	62	0	62	9	0	9
Total	Incorrect to total as transfers counts in both the institutions		220	7		227

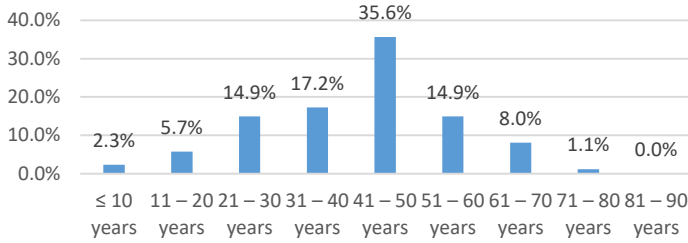
Source : Epidemiology Unit, Disease Surveillance System

Global Situation

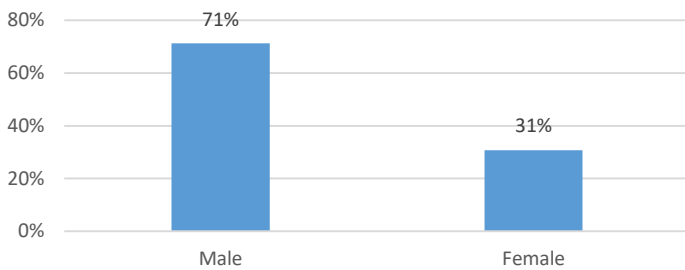
- 292,142 – Laboratory_confirmed cases (81,498 – China, 210,644 – Outside China)
 - 12,784 deaths (3267 – China, 9517 outside China)
 - Patients are reported from 186 countries/territories
- Ref. WHO situation report - 22/03/2020



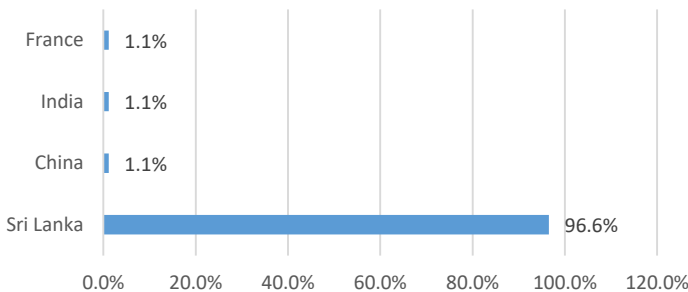
Age distribution of COVID-19 confirmed in Sri Lanka



Gender distribution of COVID-19 confirmed in Sri Lanka



COVID-19 confirmed in Sri Lanka - Nationality



District Distribution of Confirmed Patients

DISTRICT	Count
COLOMBO	19
GAMPAHA	10
KALUTARA	8
PUTTALAM	6
RATNAPURA	3
KURUNEGALA	1
GALLE	1
KEGALLE	1
BATTICOLOA	1
BADULLA	1
JAFFNA	1
MATARA	0
KANDY	0
MATALE	0
NUWARAELIYA	0
HAMBANTOTA	0
KILINOCHCHI	0
MANNAR	0
VAVUNIA	0
MULLATIVU	0
AMPARA	0
TRINCOMALEE	0
ANURADHAPURA	0
POLONNARUWA	0
MONERAGALA	0
KALMUNAI	0
QUARANTINE CENTERS	32
FOREIGNERS	3
Total	87